

Stickbuddy Jamboree



and more bears
AMB 70081

1. Jack Turner: **Gambler's Guitar**
(Jim Lowe) 2:32
2. Eddie Marshall: **Mine All Mine**
(Leroy 'Lasses' White) 2:23
3. Floyd Wilson: **Baby, Baby, Baby (You're Too Young For Me)**
(Floyd Wilson) 2:36
4. Johnny Russell: **In A Mansion Stands My Love**
(Johnny Russell) 2:23
5. Billy McGhee: **Gamble Your Kisses With Somebody New**
(Steve Martin-Harry Ahlberg) 2:20
6. Don Meehan: **That Long Long Road Of Love**
(Paul Gorman-Don Meehan) 2:47
7. Eddie Marshall: **Mobilin' Baby Of Mine**
(Rodney Morris) 2:21
8. Billy McGhee: **I'll Copyright My Baby**
(Leon Merritt) 2:17
9. Don Meehan: **(Story Of A) Triffin' Gal**
(Betty Ewing-Garry Garrett) 2:18
10. Johnny Russell: **Rome Wasn't Build In A Day**
(Beverly & Betty Prudhomme) 2:20
11. Joyce Moore: **The Devil In Me (The Angel In You)**
(Betty Joe Catlett-Noel Ball) 2:40
12. Buddy Thompson: **Echo Heart**
(Buddy Thompson-A.R. Petty) 2:31
13. Tom James: **I'm A Pig About Your Lovin'**
(Tom James) 2:27
14. Kenny Lee: **Holding Hands**
(Kenny Lee) 2:07
15. Buddy Thompson: **Point Of No Return**
(Don Gibson) 2:13
16. Jack Turner: **Story Of The Smokey Mountains**
(Griffith-Rose) 2:24
17. Rudy Hansen: **Don't Think I'll Fall To Pieces**
(Herb Weiner) 2:07
18. Carol Johnson: **According To The Law**
(Al Blasingame) 2:06
19. Buddy Thompson: **Different From The Rest**
(Danny Dill) 2:10
20. Joyce Moore: **A Roving Heart (Gathers No Love)**
(Ben Raleigh-Lou Singer) 2:22

Stickbuddy Jamboree

*So you don't go wander,
Here is music from down yonder!*

With those opening words, *Stickbuddy Jamboree* launched the Armed Forces Network's daily radio source for American country music. Broadcast from AFN Bremerhaven to military bases throughout Europe, it also nurtured a loyal civilian audience throughout Germany and into the Iron Curtain. Its rotating on-air personalities (Tommy Cash among them) clearly loved the music they played.

This is the first of two And More Bears collections devoted to the music played on AFN's *Stickbuddy Jamboree*. It offers no hits and regional artists who had more talent than commercial success. During the Golden Age of Country Music, the records featured here were the backbone of this long-running broadcast.



Jack Turner

Jack Turner (b. 1921) launched his recording career with a cover of Rusty Draper's 1953 pop hit 'Gambler's Guitar,' written by Chicago deejay Jim Lowe. Turner was a native of Haleyville, Alabama, who served in the Navy during World War II. After his discharge he was employed by the Graphic Arts Department at the Air University at the Maxwell Air Force Base in Montgomery, Alabama. Keeping musically active, Turner was a frequent

guest on Montgomery radio and television shows. Lillian Williams, mother of Hank Williams, forwarded some of Turner's songs to Fred Rose, her late

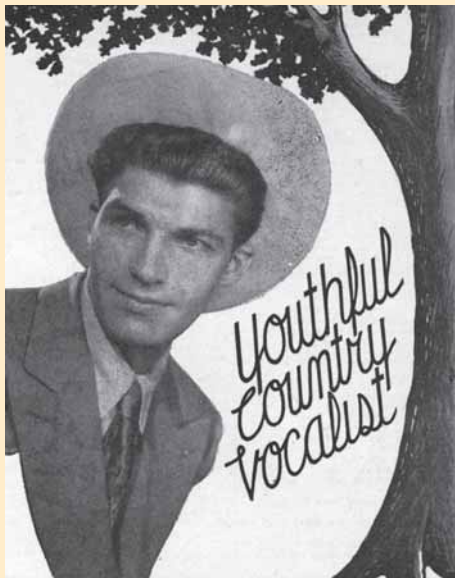


Jack Turner with Norma Hendrick

son's publisher, who in turn arranged Turner's first recording contract. Supporting a wife and three children, Turner was understandably reluctant to pursue a full-time career in music. Through the decade he recorded for several labels with minimal success, eventually abandoning music to concentrate on commercial art and commissioned oil portraits.

Eddie Marshall

Inspired by Gene Autry, Montana Slim and Ernest Tubb, Eddie Marshall (b. 1925) learned to play guitar at age nine. After serving in the U.S. Navy during World War II, he began performing in clubs around New Jersey. Impressed by his style, songwriter Steve Nelson encouraged him to record a demo disc that he could shop to various labels. After landing a contract, New Jersey club owner Al

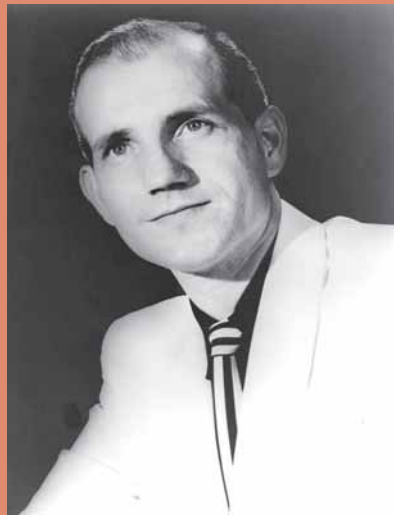


Eddie Marshall

Duttkin offered to manage his career. When Marshall's first single was released in May 1950, it garnered praise from trade publications and disc jockeys. With his band the Trail Dusters, he primarily worked along the East Coast, including a month-long October 1950 residency at a Toronto hotel. Like Jack Turner, Marshall found it difficult to balance a music career with the needs of his young family. Despite nine single releases through April 1952, he never reached a level of success that offered security to his wife and two children. Leaving his musical aspirations behind, Marshall worked as a carpenter until his 1987 retirement.

Floyd Wilson

Information about Floyd Wilson (1925-2007) remains fragmentary. He was a native of Clinton, Tennessee, about twenty miles northwest of Knoxville. In 1953 he was hired as a staff writer and



Floyd Wilson

talent scout for Valley Publishing, Inc., a Knoxville firm that struck gold with its record release of 'Crying in the Chapel,' written by Artie Glenn and sung by his son Darrell. In 1954 Carl Smith scored a No. 4 country chart hit with Wilson's upbeat 'Go, Boy Go,' indirectly launching the writer's brief recording career. Reviewing his third (and final) commercial release 'Baby' in July 1955, a *Billboard* reviewer commented on Wilson bringing 'an R&B flavor to this country side.' The floodgates were opening.

Johnny Russell

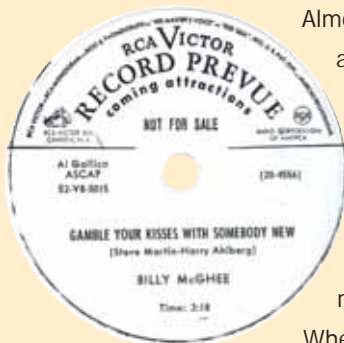
Probably the best-known artist in this collection, Johnny Russell (1940-2001) was a celebrated songwriter before his mid-'70s success as a singer and recording artist. Born in Sunflower County, Mississippi, he grew up listening to Ernest Tubb, Roy Acuff and Lefty Frizzell. At age 12 his family moved to Fresno, California, where the youngster entered local talent shows. Moving to Nashville after turning eighteen, Russell met Faber Robison, who nurtured the early careers of Jim Reeves, Johnny Horton and The Browns. Convinced of his potential, Robison booked Russell into a Nashville studio in summer 1959. 'Rome Wasn't Built in a Day' was written by Beverly and Betty Prudomme, twin sisters from Los Angeles; Sam Cooke later covered the song for his final album. 'In a Mansion Stands My Love' was a Russell original. While Russell's version didn't burn up the charts, the song brought a financial windfall when it appeared on the flip side of Jim Reeves'



Johnny Russell

1959 megahit 'He'll Have to Go.' Returning to California, Russell wrote 'Act Naturally' with Voni Morrison. That song helped define the crisp, classic '60s sound of Buck Owens and the Buckaroos, whose 1963 single quickly topped the country charts. Two years later the Beatles made it a showcase for Ringo Starr. Returning to Nashville in 1971, Russell signed with RCA and became a staple on country radio with songs like 'Catfish John,' 'Rednecks, White Socks and Blue Ribbon Beer' and 'The Baptism of Jesse Taylor.'

Billy McGhee



Almost nothing is known about Billy McGhee. His activities were not tracked in contemporary trade or fan publications; as a result, we know virtually nothing about the stations or venues he worked at. Some speculate he was from Texas because he briefly recorded for Imperial, a California label that relied on rural talent from the Lone Star State.

When 'Gamble Your Kisses with Somebody New' was released in April 1952, a Billboard reviewer hailed it as 'a better than average country tune ... sung effectively by McGhee.' Leon Merritt's 'I'll Copyright My Baby' came from a May 1952 Atlanta session. A year's end

country music necrology reported that McGhee died February 16, 1984, but the notice offered no information about his age or location.

Don Meehan

A nine-decade musical career began when six-year-old Don Meehan (b. 1931) sang over KRIC in Beaumont, Texas. As a teenager Meehan learned to play guitar, landing a job with Cliff Bruner, Moon Mullican and Shelly Lee Alley and professionally leaping over his Beaumont contemporaries George Jones



Don Meehan

and J.P. 'The Big Bopper' Richardson. After completing his first recording session in February 1953, Meehan was invited to join *The Louisiana Hayride*, but an army draft notice interrupted his career. Returning to civilian life, he studied sound engineering at the RCA Institute under the G.I.

Bill. Between 1963 and 1996 Meehan was an engineer at Columbia Records' New York studio, recording multi-platinum albums by such artists as Bob Dylan, Barbra Streisand and Simon and Garfunkel. He continued his recording career, sporadically cutting ambitious pop sides far removed from his early country material. Meehan was later Inducted into the Music Hall of Fame at the Museum of the Gulf Coast in Port Arthur, Texas. He currently owns and operates a studio in Las Vegas, Nevada.

Joyce Moore

Joyce Moore (b. 1933) got an early taste of show business at age 12 when she sang on an amateur talent show broadcast over WSIX-Nashville. Originally from Tullahoma, Tennessee, her family kept on the move with stays in Evansville, Indiana, and Sturgis, Kentucky, but that never dissuaded her from finding opportunities to sing. When her parents returned to Nashville, Moore sang with Big Jeff Bess on WLAC. At her first recording session in May 1953, she sang 'The Devil in Me (The Angel in You),' a number ideally suited for her girlish voice. At her next session in October she cut 'A Roving Heart (Gathers No Love)'; she wouldn't see another record release for thirteen years. If Moore's recording career never took off, she still kept busy, working package tours with major Grand Ole Opry talents throughout the 1960s.



Joyce Moore



Buddy Thompson

Buddy Thompson

Born in Morehead, Kentucky and raised in Tampa, Buddy Thompson (b. 1933) became a professional entertainer after serving in Korea with the U.S. Air Force. Arriving in Nashville in early 1955, Thompson met Jim Denny of WSM's Artist Service. Denny arranged several *Grand Ole Opry* appearances, signed him to the music publishing company he owned with Webb Pierce, and brokered a major label recording contract. Thompson did not stay long in Nashville, joining KNOX-Knoxville's

Tennessee Barn Dance. For Thompson's second session, *Barn Dance* cast member Don Gibson offered him 'Sweet Dreams,' a song he cut for M-G-M but had not been released. After leaving Knoxville, Thompson spent two years on KWKH-Shreveport's *Louisiana Hayride*. After flirting with New Orleans rock-and-roll for a 1957 Atco single, Thompson briefly worked in New York, Nashville and California before leaving show business in 1963. Returning to the Tampa area, he continued to make occasional appearances into the 2000s.

Tom James

A native of Tecumseh, Oklahoma, Tom James (b. 1919) was among the many young musicians inspired by Jimmie Rodgers. A talented songwriter, he moved to Nashville in 1953 and signed with Jim Denny and Webb Pierce's publishing company. Often collaborating with Troy Lee Martin, James supplied songs for Lester Flatt and Earl Scruggs, including bluegrass

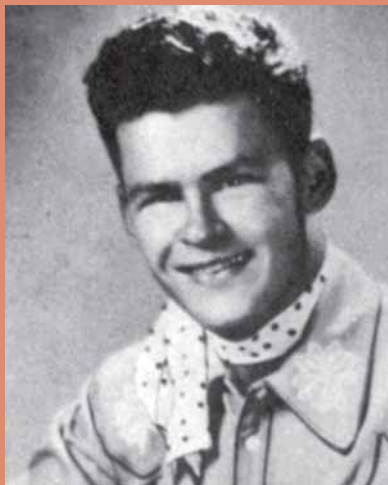
standards 'I'll Go Steppin', Too,' 'I'd Rather Be Alone' and 'On My Mind.' Evidence suggests that Martin often bought songs from Arthur Q. Smith



and Paul Gilley, but James's involvement in such transactions is uncertain. James had his only major label session in February 1954; 'I'm a Pig About Your Lovin'" was a James original.

Kenny Lee

In November 2017, Kenny Lee was inducted into the Atlanta Country Music Hall of Fame, acknowledging a career that stretched across seven decades.



Kenny Lee

Born Kenneth Lee Batts in 1935, he grew up in Morgan County, Georgia. Playing guitar since age seven, his career began unexpectedly in 1953. While watching WGST-Atlanta's Bill Lowery do a remote broadcast from a Decatur, Georgia grocery, the disc jockey invited the youth to sing a few numbers. Impressed by Lee's talent and self-assurance, Lowery invited him to cut a demo disc he could shop to record executives. Lee graduated from high school

that spring, and by September he landed a major label contract and a regular show over WGST. Primarily working throughout in northern Georgia, Lee eventually formed his own band, the Western Playboys; at various times his supporting musicians included Jerry Reed and Pete Drake. In 1956 he was featured on a weekly WLW-A-TV show, *The Atlanta Jubilee*. Despite six single releases, Lee's career never broke nationally. Sensing that Lowery was too busy to devote time to his career, Lee left Atlanta and moved to Miami, where he sang and led the band on WMIE-Miami's *Gold Coast Jamboree*. Although his career lost momentum, Lee's love for performing never wavered. Moving to southern Georgia in the late 1980s, he continued working select dates throughout the region.

Rudy Hansen

A popular country singer on WLW-Cincinnati, Rudy Hansen was nicknamed 'Rockin' Rudy Hansen' for his energetic style. Although details on his life remain sketchy, he was



Rudy Hansen



Rudy Hansen

born Wyk auf Foehr in Germany about 1929 and raised on a farm in eastern New York. Shorty Warren, who fronted a New Jersey western swing band, befriended the young singer and brought him to his radio show on WAAT in Hackensack. In September 1954 Hansen joined the cast of WLW-Cincinnati's *Midwestern Hayride*. Two months

later he made his first records at E.T. Herzog's studio; 'Don't Think I'll Fall to Pieces' came from a February 1957 Nashville session. He remained active with the *Hayride* into 1958, working county fairs and package shows as far away as Maine. In January 1958 Hansen made his final recordings; neither 'Just As Long' or 'Saddle Shoe Polka' clicked with radio programmers and record buyers. Leaving Cincinnati, Hansen moved north to Detroit. He performed at a White House

dinner in January 1959 and ended the year heading a 12-week USO tour of American military bases in Europe. From there Hansen's trail goes cold; he reportedly moved to California.

Carol Johnson

Like Joyce Moore, Carol Johnson (1933-2019) never had much of a recording career, despite a singing voice comparable to Anita Carter's. Hailing from Brunswick, Georgia, she was initially captivated by Kitty Wells' straightforward style. Writing songs while still in her teens, Johnson showed her portfolio to Gabe Tucker who managed Ernest Tubb's publishing companies. Her



Carol Johnson

efforts led to a one-shot April 1955 recording session that included 'According to Law.' The following year she was paired with Jim Reeves for a duet, ('I'm the) Mother of a Honky Tonk Girl.' Placed on the flip side of Reeves' 'According to My Heart,' the record did little for her career. For the next decade Johnson worked as a featured act on package tours, occasionally appearing on Ernest Tubb's syndicated television show. When Jim and Jesse McReynolds abandoned bluegrass in 1966 for a more commercial country sound, they hired Johnson to enhance their show dates and appear on their weekly WSM-TV television program. Leaving Jim and Jesse after her 1973 marriage, Johnson continued writing songs, primarily for the gospel market.

Dave Samuelson

Camden, Indiana

October 2020



Producers: Various

Reissue Producer: Richard Weize

Mastering: Peer Meyer

Liner Notes: Dave Samuelson

Photos & Illustrations: and more bears archive,

Photo Restoration: Sven T. Uhrmann

Artwork: Sven T. Uhrmann

Thanks to: L-P Anderson, Hank Davis, Big Al Turner

